

National overview of end-of-life research in France

Each year, the French national platform for End-of-life research releases an overview of this research area, based on data of its national directory.

The data presented below was extracted as on june 1st 2021.

Researchers

336 persons are identified as being currently working on end-of-life.

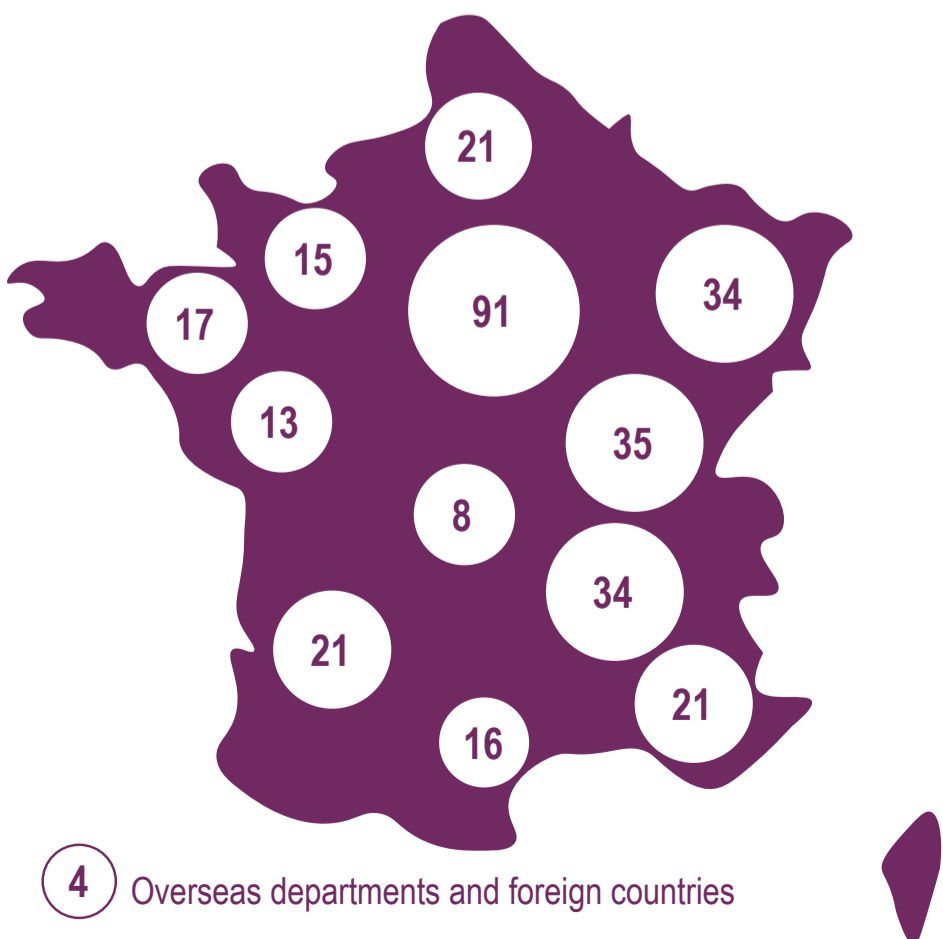


63%



37%

Regional distribution



Research topics

Research topic	Number of researchers mentioning these topics
Subjective experiences and perceptions	71
Places of End-of-life : Home (31), Long time care facilities (32)	63
Decision making processes	59
Anticipation / Advanced care planning	57
Éthique, Bioethics	52
Social and cultural representations	45
Sedation	42
Conceptual research	45
Evaluation of professional practices / Care management / Tools and scales	41
Support to patients	37
Support to families and caregivers	37
Bereavement	35
Law and legislation	32
Whishes to die / Euthanasia / Assisted suicide / Suicide	32
Drug, Therapies, Medical devices	30
Pain management	30
Communication	23
Quality of life	22
Distress	22
Symptoms evaluation and treatment	21
Health professionals training and Pedagogy	20
Care trajectories	20
Early palliative care	18
Care organisation	16
Public health	15
Alimentation and Artifical nutrition	13
Interprofessionnal collaborations	13
History of palliative care (6), History of death (7)	13
Spirituality and religion	12
Organ donation and transplant	8
Health databases	6
Health policies	5
Therapeutic patient education	4
Epidemiology	3
Agony	3
Philosophy of death	3
Economic issues	3

62 fields

Clinical (54), social (10) and cognitive (5) psychology, psychoanalysis (5), work psychology (1)



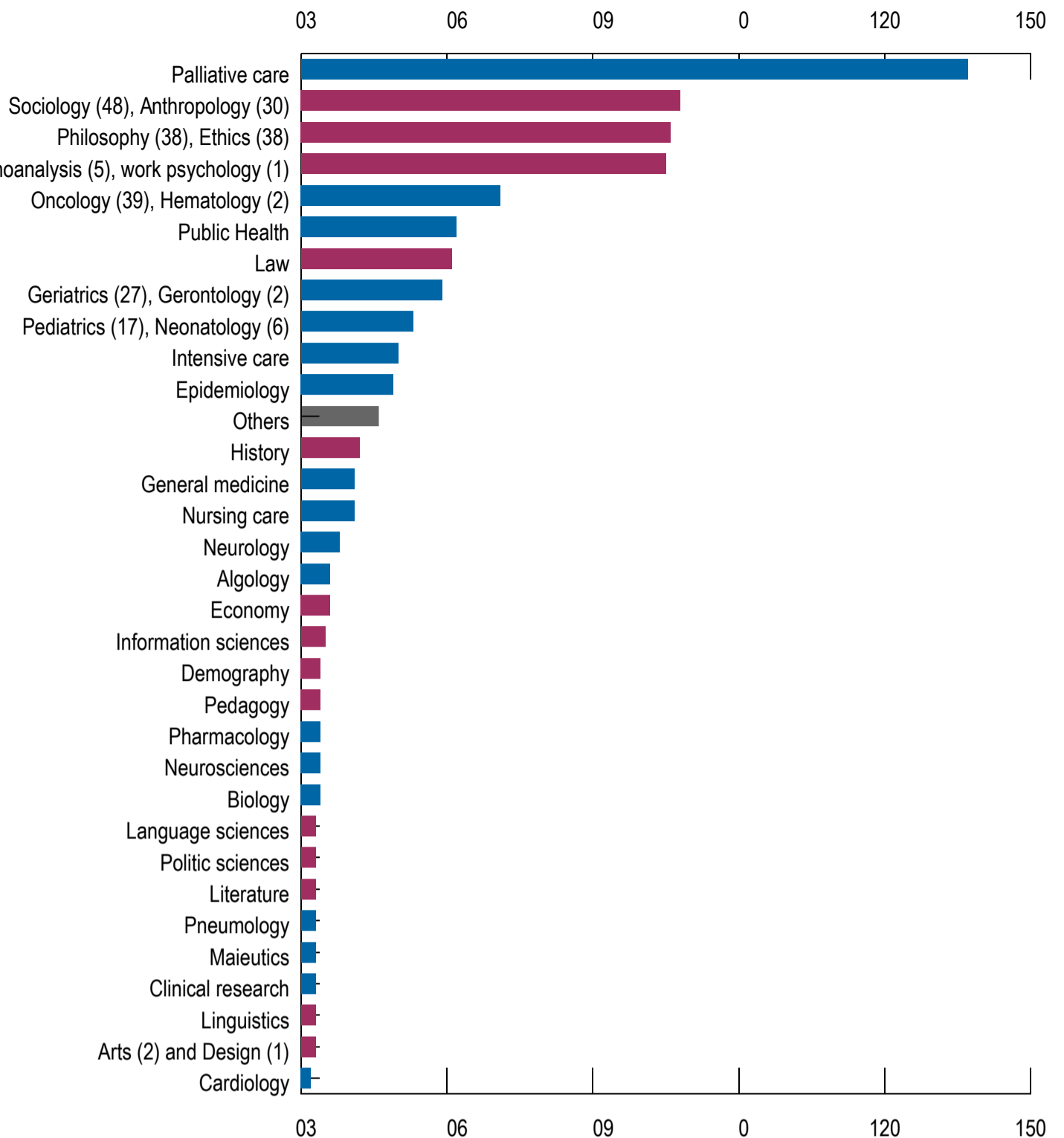
54%

Medical and paramedical sciences, Life sciences



46%

Humanities, Social Sciences, Arts



«Other» refers to : Archaeology, Child psychiatry, Clinical pharmacy, Educational sciences, Emergency medicine, Food sciences, Genetics, Hyperbaric medicine, Infectious diseases, Nephrology, Nutrition and dietetics, Psychoanalysis, Psychomotricity, Semiotics, Theology, Management sciences.

Populations and pathologies

on which researchers are working

Cancer	67
Palliative care	66
Elderly people	56
Intensive care	24
Neuro-degenerative diseases	23
Pediatrics	23
Vulnerable populations	23
Health care professionals	21
Persons with disabilities	11
Primary care and general practice	8
Neonatology	8
Psychiatric diseases	8
Organ failure : Nephrology (2), Cardiology (3), Pneumology (2)	7
Relatives / Family and caregivers	7
Others : Gynecology (1), Obesity (1), Populations of the past (1), Protected adults (1), Somatic diseases (1), Victims of crime (1)	6
Emergency care	5
Genetic diseases	4
Funeral services	3
Adolescents and young adults	3
Internal medicine	3
Parents of severely ill children	3
Volunteers	3

71% are affiliated to an academic research unit

238 researchers in 146 research units