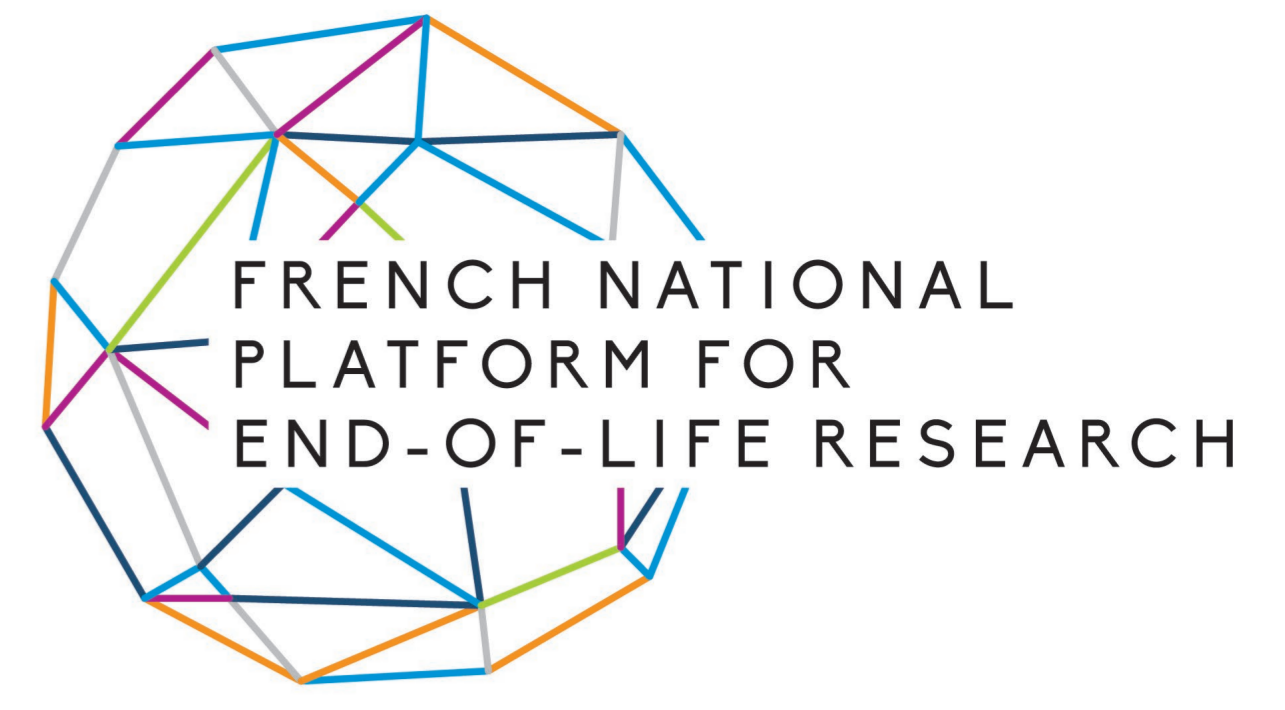


Mapping and Trends in End-of-Life Research in France: A National Analysis (2018–2025)



S. Apuet¹, S. Carvalho², A. Evin³, M. Le Dorze⁴, S. Pennec⁵, A. Pernin¹

1. French National Platform for End-of-Life Research, University Marie and Louis Pasteur, Besançon, France - 2. University Lyon 1, Lyon, France - 3. Nantes Université, CHU de Nantes, Service Interdisciplinaire Douleur, Soins Palliatifs et de Support, Médecine intégrative, Nantes, France - 4. Hôpital Lariboisière, AP-HP Nord, INSERM UMRS 942, Université Paris Cité, Paris, France - 5. Institut national d'études démographiques, Aubervilliers, France

CONTEXT AND AIMS

- Creation of French National Platform for End-of-Life Research in 2018
- Identification of researchers and research units : Founding of the Research Observatory on End-of-Life (EoL)
- Highlight key, emerging, and unexplored research themes
- Enhance international visibility
- Foster participation in European projects

METHODS

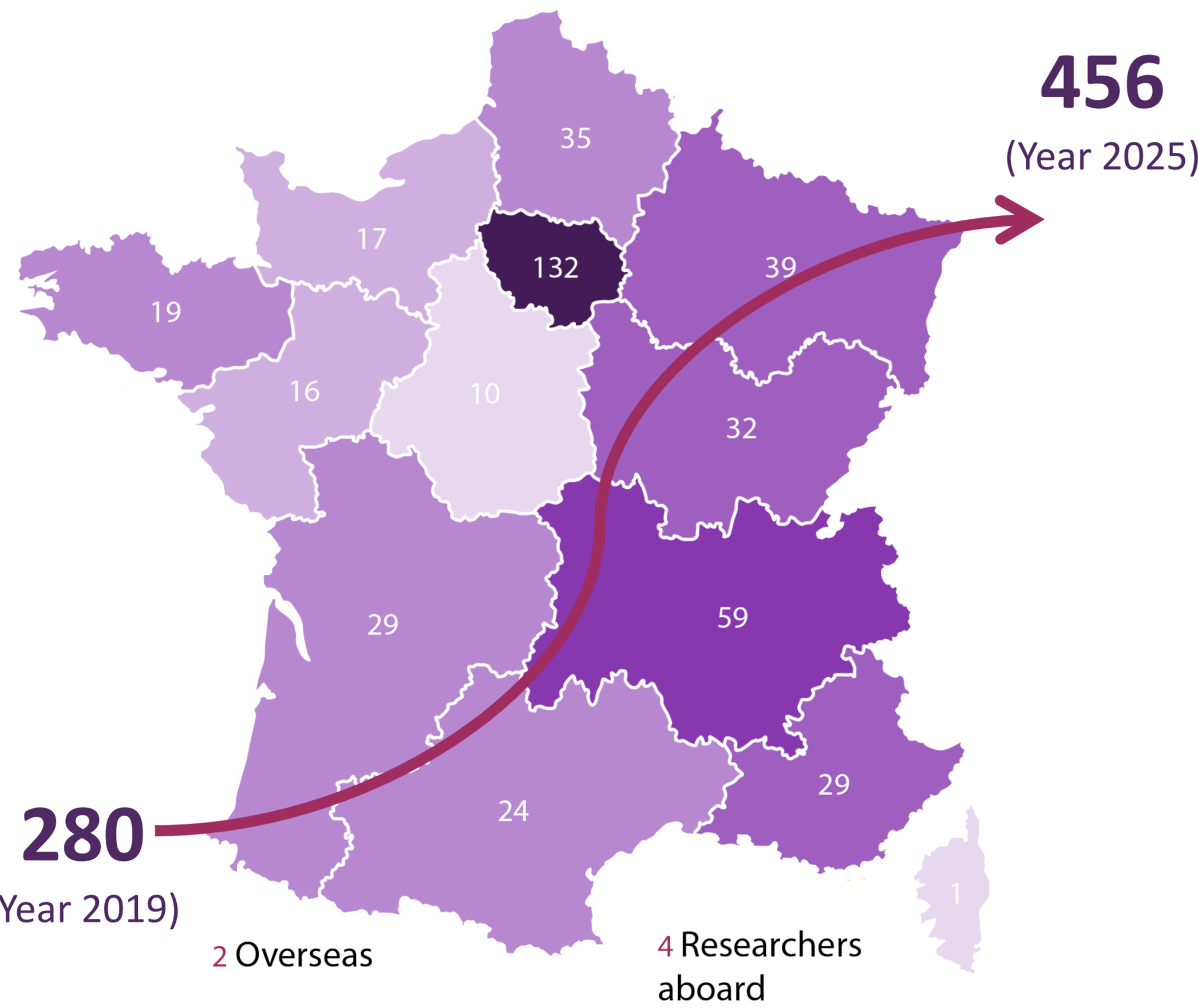
- Systematic mapping of research activities
- Longitudinal analysis (since 2019)
- Thematic, condition and population-based classification
- Disciplinary trends
- Geographical distributions
- Overview of ongoing research projects

RESULTS

456 Active researchers

175 Affiliate research units

64% Female representation



A 63% increase in identified national researchers, but with unequal resource distribution

Distribution of research areas

Humanities & Social Sciences (52%)

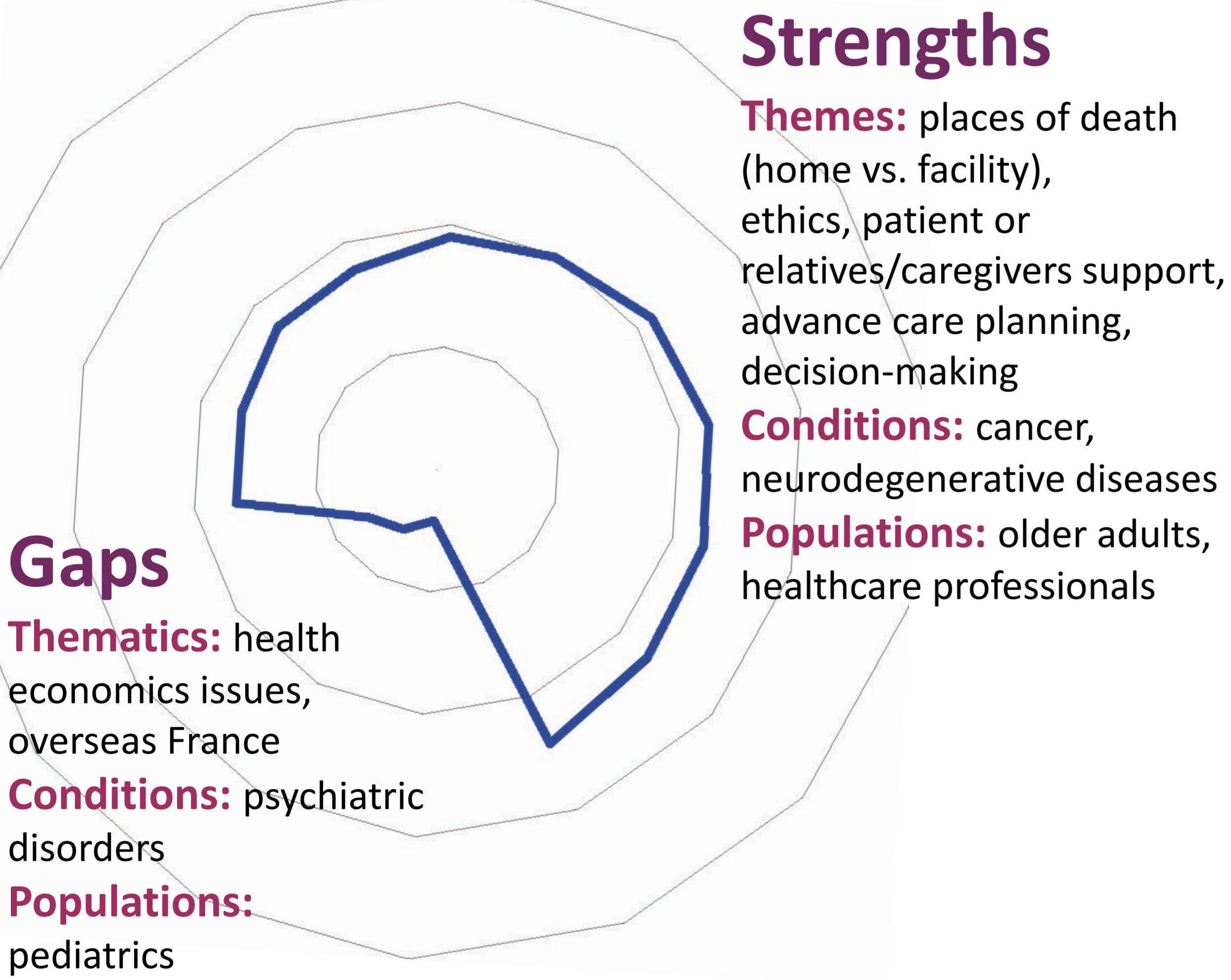
Top disciplines:
Sociology/Anthropology (113)
Philosophy/Ethics (110)
Psychology (84)

Medical, Paramedical & Life sciences (48%)

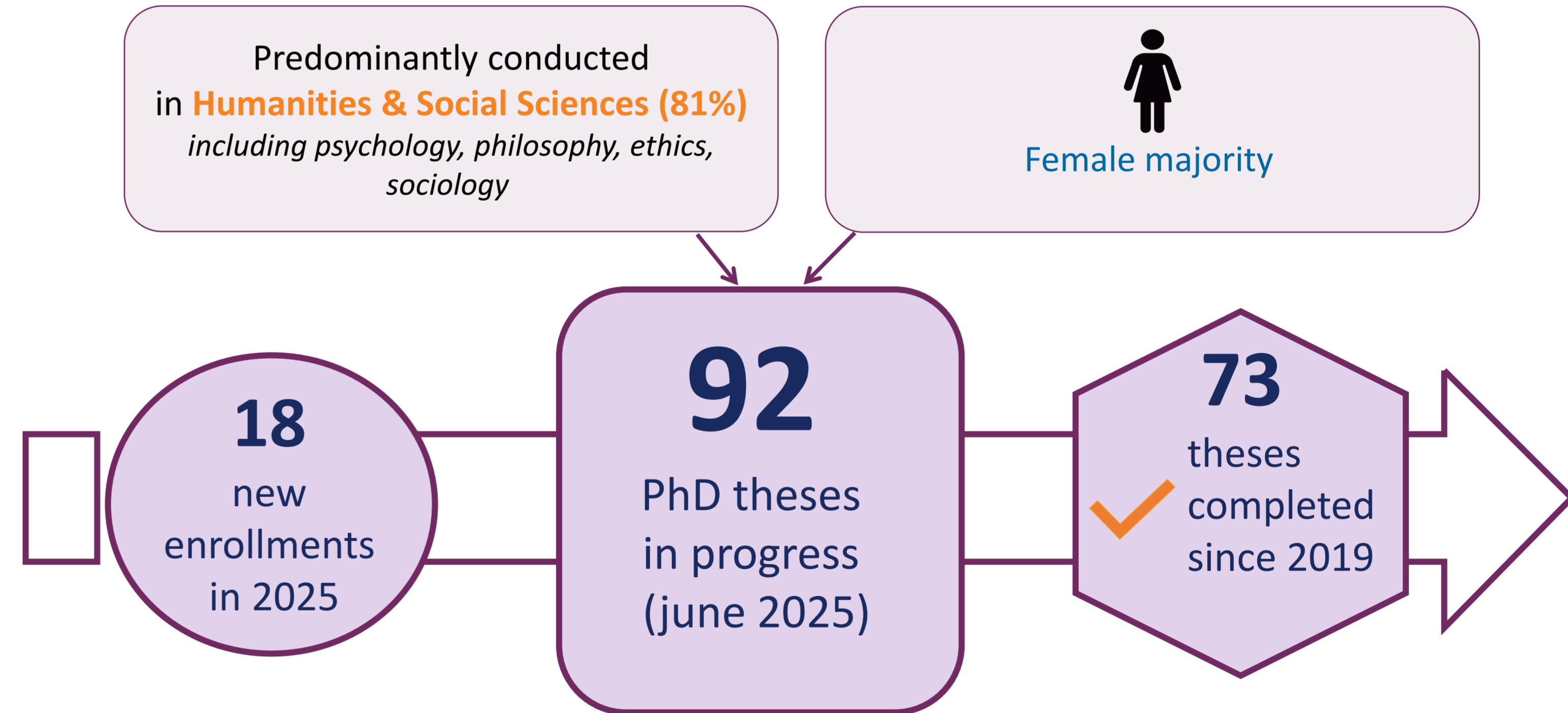
Top disciplines:
Palliative care (174)
Oncology (54)
Public health (40)

92 active nationally-funded projects

1 European Project coordinated (INSPIRE – Horizon Europe)



The EoL French Research radar



Top PhD focus areas

Experiences & perceptions (30)

Wish to die, euthanasia, assisted suicide (30)

Organ donation (19)

The Academic Pipeline: incubating the next generation

KEY MESSAGES

- A need for **sustained national coordination** with a rich and diverse landscape at the national level
- Ensuring meaningful impact on clinical practices and society
- **Strong academic engagement** with high mobilization of Humanities and Social Sciences
- **Enhancing international visibility of French research** and fostering participation in European projects
- A potential, adaptable model for countries aiming to strengthen End-of-Life research ecosystems



New in 2026: Launch of an online directory of international research partners

Connect, register, and join the network via our Platform website

mshE
MAISON DES SCIENCES HUMAINES
ET ENVIRONNEMENTALES
CLAUDE NICOLAS LEDOUX - UMR3104

**UNIVERSITÉ
MARIE & LOUIS
PASTEUR**

cnrs

MINISTÈRE
DE L'ENSEIGNEMENT
SUPÉRIEUR,
DE LA RECHERCHE
ET DE L'ESPACE
Liberté
Égalité
Fraternité

MINISTÈRE
DE LA SANTÉ, DES FAMILLES,
DE L'AUTONOMIE
ET DES PERSONNES HANDICAPÉES
Liberté
Égalité
Fraternité

Contact

plateforme.recherche.findevie@univ-fcomte.fr
<https://www.plateforme-recherche-findevie.fr/>

Platform website

